

INSTRUCTIONS FOR INSTALLING A MAKA VALIDATOR KIT P/N 1452364 OR P/N 1452365 IN A NATIONAL VENDORS® SNACKTRON 1™, ALSO P/N 1462325 OR P/N 1462326 IN A NATIONAL VENDORS® SNACKTRON 2™

CHECK THE PARTS RECEIVED IN THE KIT WITH THE PARTS LIST IN THESE INSTRUCTIONS. FIGURE 1 SHOWS ALL THE PARTS IN THE KIT. IF ANY PARTS ARE MISSING, CONTACT NATIONAL VENDORS' PARTS DEPARTMENT IMMEDIATELY.

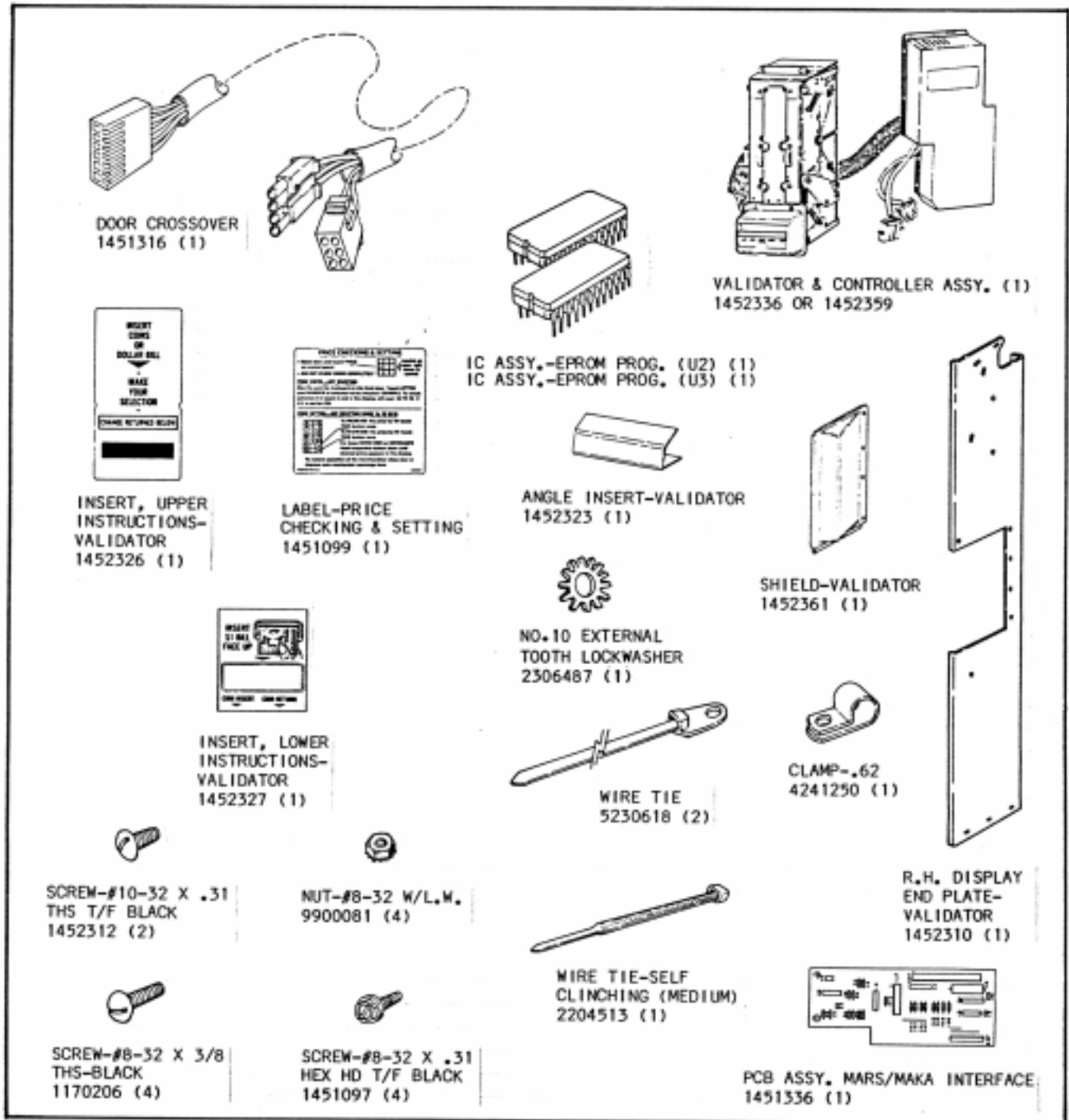


FIGURE 1

ERPOM part numbers are subject to change, depending on version modification.
 This kit contains 2 IC assemblies (EPROM prog.) designated U2 and U3.

SNACKTRON 1

Kit P/N 1452364 (stacker capacity - 115 bills) contains the following:

<u>Part Number</u>	<u>Description</u>	<u>Quantity</u>
1451369	IC Assembly, EPROM (U2)	1
1451370	IC Assembly, EPROM (U3)	1
1170206	Screw, #8-32 x 3/8 THS-Black	4
1451097	Screw, #8-32 x .31 Hex Hd. T/F-Black	4
1451099	Label, Price Checking & Setting	1
1451316	Door Crossover	1
1451336	PCB Assy.-MARS/MAKA Interface	1
1452310	R.H. Display End Plate-Validator	1
1452312	Screw, #10-32 x .31 THS T/F Black	2
1452323	Angle Insert, Validator	1
1452326	Insert, Upper Instructions-Validator	1
1452327	Insert, Lower Instructions-Validator	1
1452336	Validator & Control Box	1
1452361	Shield, Validator	1
1452363	Instructions, MAKA Installation	1
2204513	Wire Tie, Self Clinching (Medium)	1
4241250	Clamp, .62	1
5230618	Wire Tie	2
9900081	Nut, #8-32 W/LW	4
2306487	Lockwasher, No.10 External Tooth	1

Kit P/N 1452365 (stacker capacity - 400 bills) parts required same as for kit P/N 1452364 except validator and controller assy.

1452359	Validator and Controller Assy. -400	1
---------	-------------------------------------	---

SNACKTRON 2

Kit P/N 1462325 (stacker capacity - 115 bills) contains the following:

<u>Part Number</u>	<u>Description</u>	<u>Quantity</u>
1170206	Screw, #8-32 x 3/8 THS-Black	4
1451097	Screw, #8-32 x .31 Hex Hd. T/F- Black	4
1451099	Label, Price Checking & Setting	1
1451316	Door Crossover	1
1451336	PCB Assy.-MARS/MAKA Interface	1
1452310	R.H. Display End Plate Validator	1
1452312	Screw, #10-32 x .31 THS T/F Black	2
1452323	Angle Insert, Validator	1
1452326	Insert, Upper Instructions-Validator	1
1452327	Insert, Lower Instructions-Validator	1
1452336	Validator & Control Box	1
1452361	Shield, Validator	1
1452363	Instructions, Maka Installation	1
2204513	Wire Tie, Self Clinching (Medium)	1
4241250	Clamp, .62	1
5230618	Wire Tie	2
9900081	Nut, #8-32 W/LW	4
2306487	Lockwasher, No.10 External Tooth	1

Kit P/N 1462326 (stacker capacity - 400 bills) parts required same as for kit P/N 1452325 except validator and controller assy.

1452359	Validator and Controller Assy. -400	1
---------	-------------------------------------	---

IMPORTANT

This kit can be installed only if the merchandiser is equipped with a COINTRON™ 3000 or MARS 5000 coin changer.

This kit should be installed by qualified technicians using the proper tools for electronic work.

KIT INSTALLATION

To install kit, disconnect merchandiser cord from the service outlet, and open cabinet door. Refer to the attached illustrations while performing the following steps.

1. REPLACEMENT OF INSTRUCTION INSERTS (UPPER & LOWER)

- A. Remove data access cover (see Figure 2).
- B. Remove display end plate and discard light assembly harness clamp.
- C. Take upper casting off.
- D. Replace upper instruction insert with new insert (P/N 1452326).
- E. Replace upper casting.
- F. Take coin chute assembly off.
- G. Take scavenger assembly off as follows:
 1. Remove spring
 2. Remove cotter pin
 3. Remove scavenger handle
 4. Remove 4 screws
- H. Take lower casting off.
- I. Replace lower instruction insert with new insert (P/N 1452327).
- J. Replace lower casting.
- K. Replace coin chute assembly and scavenger assembly.

2. INSTALLATION OF MAKA BILL VALIDATOR

- A. Tape angle insert (P/N 1452323) to bill validator (P/N 1452336) (See Figure 3).
- B. Attach validator shield (P/N 1452361) and labels to new display end plate (P/N 1452310) using four 8-32 x 3/8 THS Screws and four 8-32 W/LW nuts.

- C. Attach new display end plate, and data access cover.
- D. Attach validator using four 8-32 x .31 Hex Hd T/F screws.
- E. Tuck validator cable between data access cover and end plate.
- F. Attach validator control box using two 10-32 x .31 THS T/F screws and one No.10 External Tooth Lockwasher.
- G. Attach rod support to end plate.

3. MODIFICATION OF CONTROLLER ASSEMBLY

- A. Disconnect wire harnesses from controller assembly, (see Figures 4 and 5).

NOTE

Access to the main power harness, located at the back of the controller assembly, can be made while removing assembly.

- B. Disconnect coin mechanism interface harness.
- C. Remove controller assembly.
- D. Remove controller assembly cover.
- E. Disconnect coin mechanism interface harnesses from J43, and ribbon wire from J49.
- F. Cut coin mechanism interface harness wire tie and remove from controller assembly.
- G. Remove the MARS 5000 interface PCB.
- H. Attach the MARS/MAKA PCB interface (P/N 1451336).
- I. Attach the door crossover (P/N 1451316) to J71. Reconnect coin mechanism interface harness and ribbon wire to the MARS/MAKA PCB interface.
- J. With wire tie (P/N 5230618), secure the door crossover and the coin mechanism interface harness to the controller assembly.

WARNING

Use "IC puller" when removing EPROM's.

- K. Locate and remove EPROM's.
- L. Insert new EPROM's (P/N 1451369) and (P/N 1451370) in U2 and U3 respectively for the SNACKTRON 1™ or (P/N 1461319) and (P/N 1461320) for SNACKTRON 2™.
- M. Replace controller assembly cover.
- N. Replace controller assembly, connecting back power harness and coin mechanism interface harness before installation.

- O. Replace remaining harnesses to controller assembly.
- P. Replace the upper cabinet harness clamp with the new clamp - .62 (P/N 4241250) so that both the door crossover and light assembly harness are secured.
- Q. Connect door crossover to the validator control box.
- R. Secure door crossover to door by using clamp (P/N 5230618). Attach clamp under top thumb screw on the ribbon clamp, being careful not to pinch display ribbon harness.
- S. Fasten wire tie (P/N 2204513) around door crossover and light assembly harness, approximately half way between wire clamps.

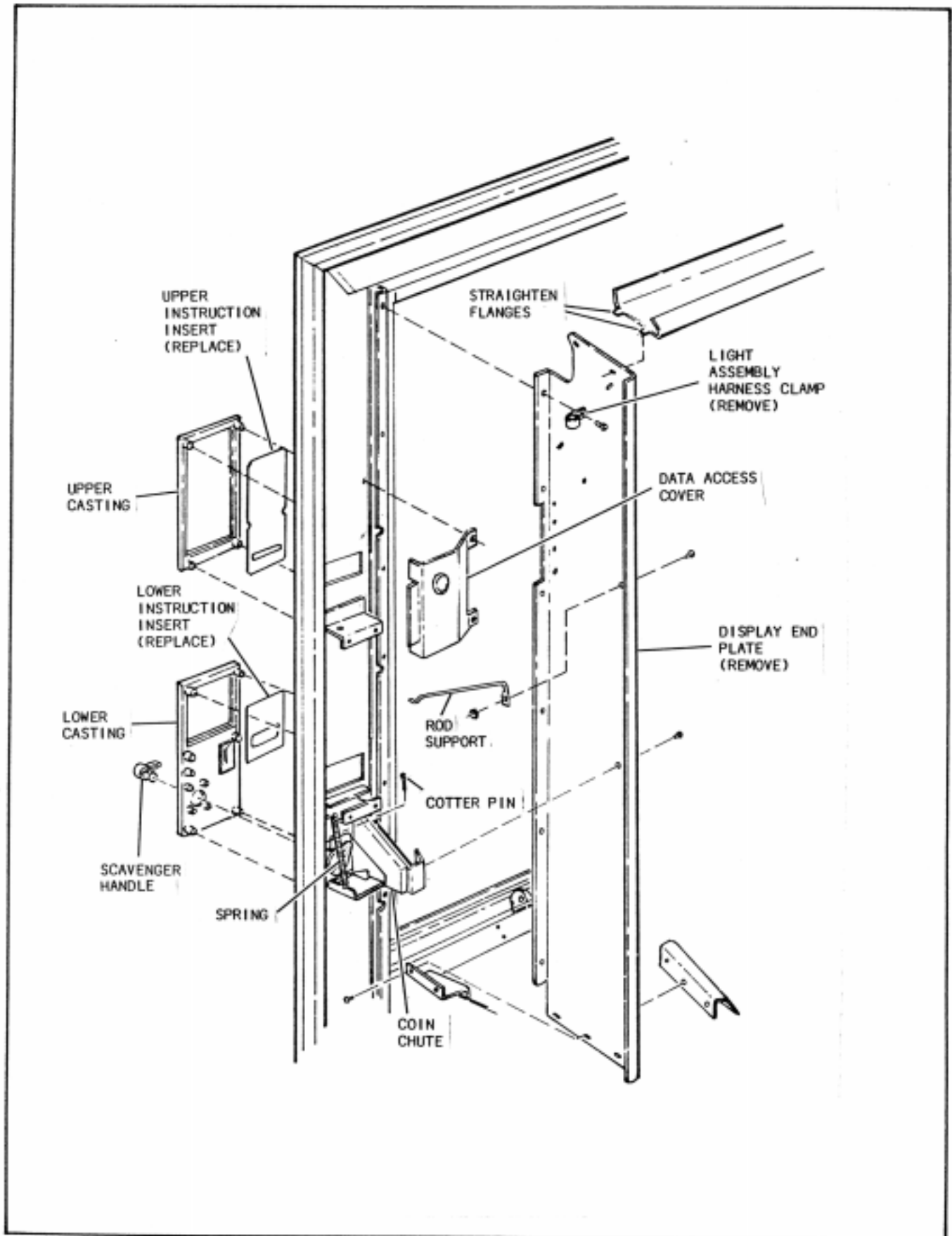


FIGURE 2

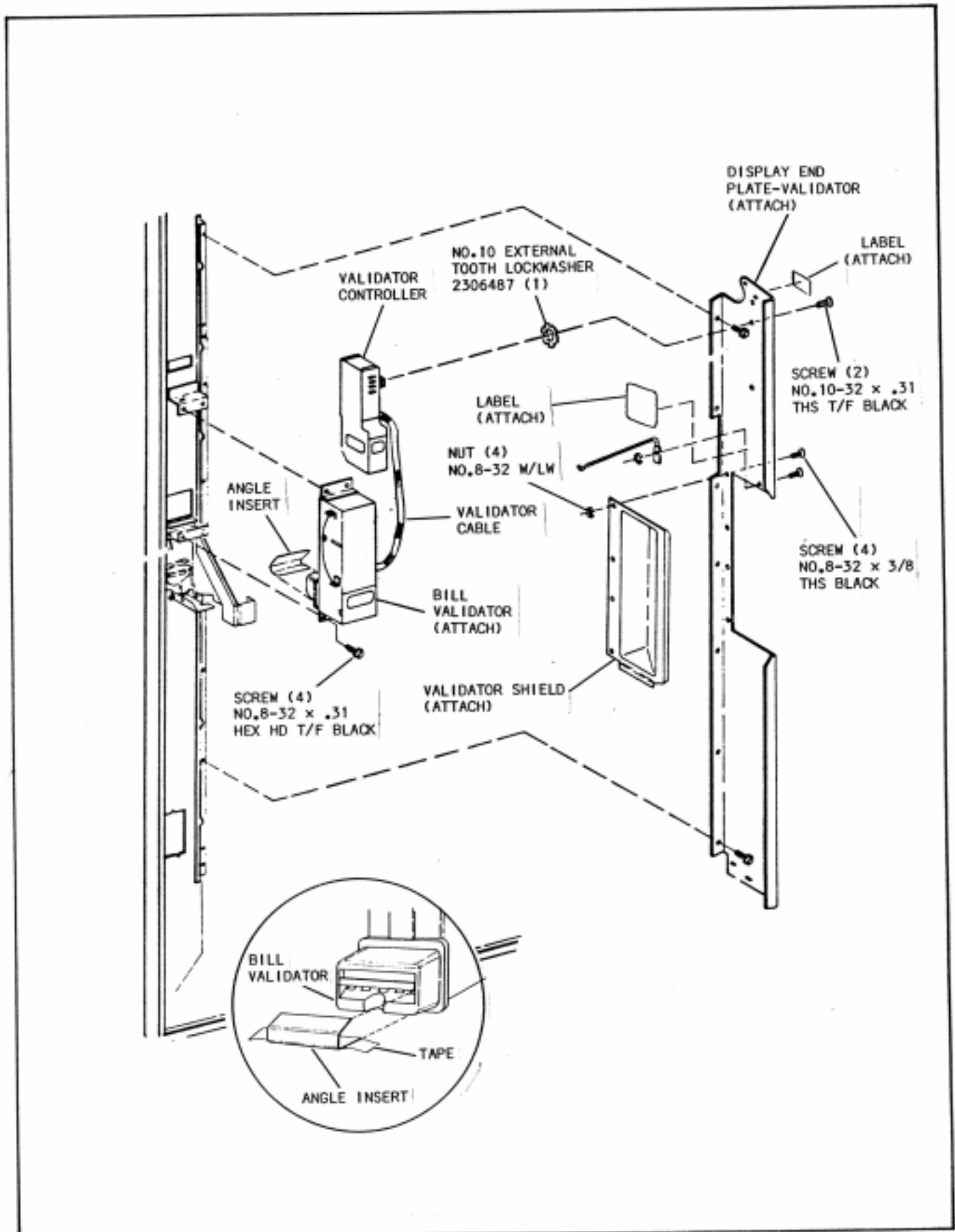


FIGURE 3

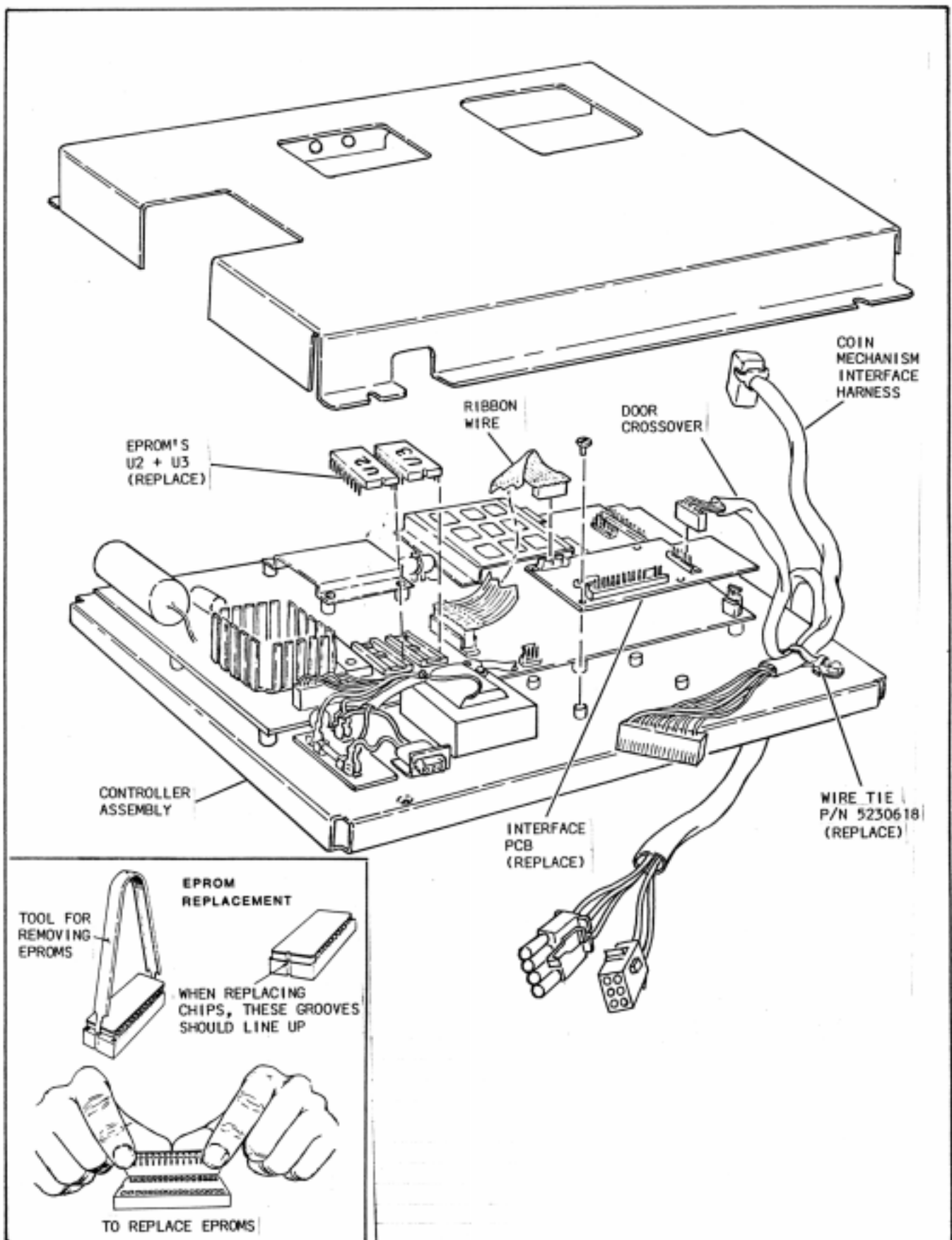


FIGURE 4

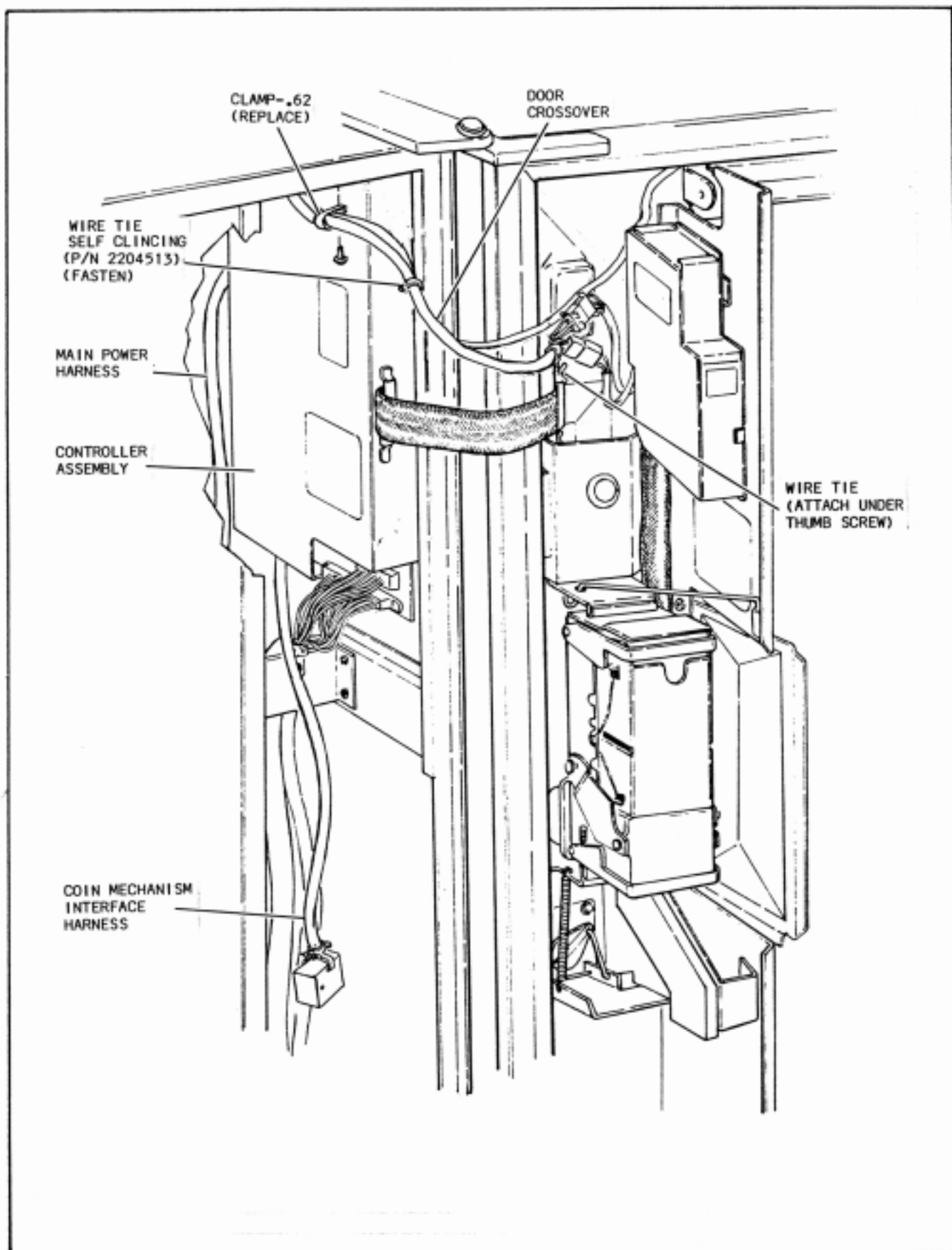


FIGURE 5